

BY GRACE... WITH GRATITUDE

LUTHERAN MINISTRIES OF MERCY 2021 ANNUAL REPORT



Lutheran Ministries of Mercy — “By Grace...With Gratitude”

Dear Friends, Families and Supporters,

As we come into a new year, 2021 will be remembered as the second year of the Covid-19 pandemic. A pandemic that changed our world and impacted our health care organizations more than any other. Not only the devastating health consequences suffered by so many right here at home and across the globe---but the economic, social and political aspects that have affected us all.

Despite these hardships, the ministries of Lutheran Ministries of Mercy (LMM) have been sustained by faith and a steadfast commitment to our work in this world. We know that God’s grace has been present in our organizations, with the people that toil beside us and with those that we serve not only this year, but for as long as we have been doing this crucial work. He has made us exactly who we are meant to be and placed us in this moment, surrounded by people who we are intended to be with, and given us the gifts to be free to care for one another.

Through teamwork and trust, our LMM affiliates have come together to reach across organizational boundaries, to learn from one another and gain insights from a broader perspective. This point in time has tested our resiliency but will reshape our organizations and position us to better empower and care for those we serve.

Your generosity and commitment to the work of these ministries have enabled us to continue to fulfill our missions through this uncertain yet critical time. We want to thank you for your continued devotion and we are pleased to share the results of our work together...work that your trust and support have made possible.

With Gratitude,

Terri Rodriguez



Terri Rodriguez
President and CEO
Lutheran Ministries of Mercy

Chuck Winters



Chuck Winters
Chair, Board of Directors
Lutheran Ministries of Mercy



Who We Are In Service to Others

Lutheran Ministries of Mercy (LMM)

Strength through Partnership in Administration and Management

Lutheran Ministries of Mercy was founded in 2013 with the goal of promoting sustainability, improvement and innovation in the direct service operations of partner organizations. Initially created by a partnership of Filling Homes in Napoleon, Ohio and Luther Home of Mercy in Williston, Ohio, the group was then joined by Lutheran Social Services of Northwestern Ohio in 2015. Working together, administrative services are combined, shared and designed to assist affiliated agencies in enhancing mission-driven community services by providing cost-effective and efficient management expertise.

Each of the organizations maintains their independent status as well as the independent status of their Foundations. Yet, the combined strength, expertise and size of affiliated agencies positively affect each organization. Affiliates have the advantage of a wider breadth and depth of expertise, of learning from one another, and sharing best practices. They also benefit from a larger, collective visibility and voice in advocacy, rate setting and vendor contracts, as well as in policy development and organizational systems design.

Together, our organizations impacted more than **29,493** lives during 2021, serving both children and adults across 24 counties in Northwestern Ohio and Southeastern Michigan. Dedicated staff, volunteers and donors join us all year long to meet the needs of those in our care. We hope you will enjoy reading about our ministries in the pages ahead and continue to join us in service to others.

Intermediate Care Facility Residents:	130
Day Program Participants:	214
Community Housing Residents:	93
Supported Living Clients:	109
Clients Served in Mental Health and Substance Abuse Programs:	1,136
Clients served at food pantries:	13,871
Re-entry clients:	360
Scott Hub contacts:	11,897
Employer Resource Network clients:	323
Financial Opportunity Center Clients:	1,095
Rental Assistance:	615



fillinghome.org
(419) 592-6451



lutherhome.org
(419) 836-7741



lssnwo.org
(419) 243-9178

Summary of Impact

Number of
People Served

29,493

Number of
Volunteers

258

Number of
Volunteer Hours

4,131

Number of
Staff

904



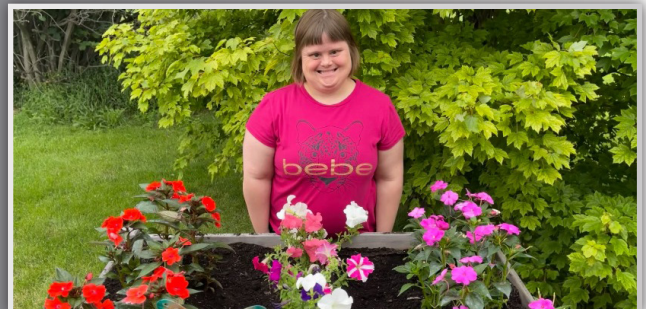
Residents of Luther Home of Mercy were able to enjoy an afternoon in downtown Toledo for an area arts festival! They are beautiful and being outside enjoying the sunshine is a true blessing!



Sean is able to enjoy time in the heated therapy pool with the help of staff. Water adds a different sensory element and allows for some relaxation free from the restrictions of a wheelchair and gravity! Want to jump in and join him?



John is a dedicated LSS Food Pantry Volunteer--he and others make shopping enjoyable for those in need of food for the month.



Heather loves summer for planting flowers at her home. Her masterpiece of color and smile will always brighten any day!

Operating Budget

Filling Homes: \$16,619,423

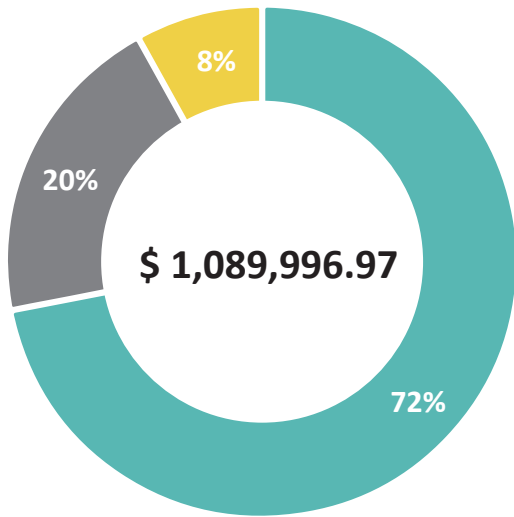
Luther Home of Mercy: \$20,921,210

Lutheran Social Services: \$2,057,719

TOTAL: \$39,598,352

Stewardship

Lutheran Ministries of Mercy and our affiliates are committed to the care and stewardship of all gifts. We continually work to improve our efficiencies and thank you for your unwavering support. Below is an unaudited reflection of our 2021 year in review. Audits and 990's will be filed mid-2022.

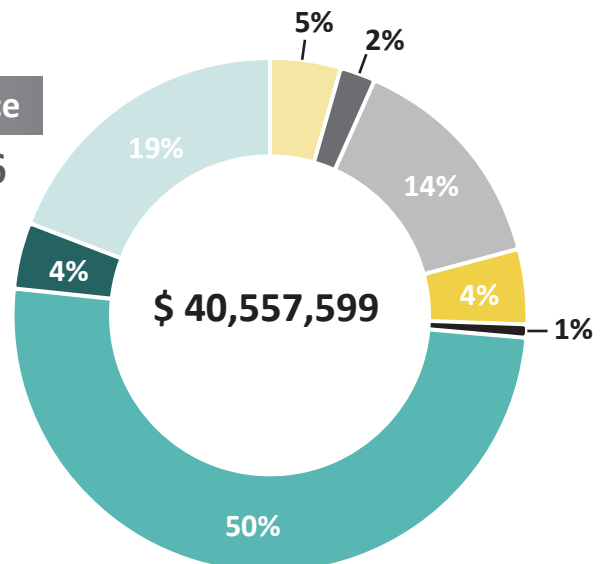


Ministry Giving

- Congregational Gifts – \$85,955.50
- Individual/Corporate Gifts & Grants – \$780,656.47
- Bequests – \$223,385.00

Revenue by Operating Source

- Adult Day Services/Vocational Habilitation – \$1,904,076
- Counseling – \$842,770
- Covid-Emergency Funding – \$5,805,272
- Grants/Refunds/Other – \$1,805,412
- Housing – \$379,995
- Intermediate Care Facilities – \$20,417,393
- LSS Partner Programs – \$1,748,734
- Supported Living – \$7,653,947



Our Shared Ministry

The strength of Lutheran Ministries of Mercy and our affiliates lies in our ability for collective action. Our work together enables us to find balance in an environment where things are constantly changing. We remain hopeful because you made supporting our ministries a priority through prayer and dedication of your time and treasures.

Additionally, we are honored that our staff, more than 900 members, stood strong and worked diligently, even during the height of the pandemic. This dedication allowed God's light to shine on our programs. Joined by 258 volunteers, together we have sustained the vital work of our ministries. Together, we share the following program highlights with a renewed sense of mission and gratitude.

FOOD AND PERSONAL NEEDS PANTRIES

208,065

A robust local system of 14 emergency food and personal needs pantries throughout Northwest Ohio work to meet the growing community need for both food and personal care items. Our Choice Pantry allows clients to select their own food instead of receiving a pre-packed or standard bag of groceries. With this method, clients do not have to take items they already have, do not like, or cannot eat for health or personal reasons.

As more in our communities are experiencing hunger, these pantries - staffed solely by volunteers - provided approximately 208,065 meals in 2021.



323

EMPLOYER RESOURCES



Employer Resource Networks transform companies one employee at a time. The purpose of these private-public partnerships is to improve workforce retention through employee support and training. This national movement links small and mid-size businesses with a lead agency that then employs a Success Coach. As the lead agency, LSS employs a coach that visits each employer in the network to provide a host of resources for struggling employees. The existing network, Shared Success is soon to be followed by a second partnership group.

FINANCIAL COACHING

1,095

In partnership with the Local Initiative Support Corporation (L.I.S.C) and Ohio Means Jobs, LSS offers financial coaching, debt management, credit building service, education and employment readiness training in various community locations.

In addition, the Family Stabilization program assists families in crisis by helping them remain in their homes and schools to allow for the best support for academic success. Families with school-age children who are in housing but at risk of becoming homeless may receive temporary rent or utility assistance. LSS has for years, offered assistance for local residents with their taxes. Instead of paying to file, LSS trained staff are able to help for free, allowing the client an opportunity to use those funds for their daily needs.



615

RENTAL ASSISTANCE FOR TOLEDO FAMILIES



In response to rental hardships due to Covid-19, the City of Toledo continued to partner with Lutheran Social Services (LSS) to provide administrative/case management support to individuals and families in the City of Toledo who are homeless and at risk of homelessness. Three Covid-19 related rental assistance grants are being distributed.

Because LSS is a full-service social service agency, staff were also able to offer additional services including financial coaching, food resources, and other services as needed. According to Traci Jaksetic, Vice President of LSS, "Covid-19 has continued to highlight the need for rent & utility assistance for families who were already on the brink of poverty. Rental assistance has continued to be the key to lessen some of the long-term economic damages and to put families back on their feet." Lutheran Social Services was honored to accept the responsibilities of these programs and worked with more than 615 families to keep them free from eviction.

11,897

SCOTT HIGH SCHOOL COMMUNITY HUB

The Scott High School Community Hub has been providing much needed services since 2011 through Lutheran Social Services, United Way and Toledo Public Schools collaborative efforts. The Community Hub is not a program but a strategy that envisions safe and healthy communities where everyone has the opportunity for growth and success. Under the leadership of Director Joe Peterson, the Hub works by enlisting programs and services to enhance every community aspect from the students, families, and those living within a specific mile radius of the school.



It may have been understandable to relinquish responsibilities during the pandemic as Covid-19 caused many hurdles and challenges in delivering programming. However, the Scott Community Hub took this time as an opportunity to roll up its sleeves and dive deeper into the work. Since the pandemic, the Hub made school to family contacts and created programming that fit the restrictions placed upon it. During these challenging times, the commitment to service takes great strides in creating a school that is invested in its community and a community that is invested in its school.

MENTAL HEALTH AND ADDICTION SERVICES

With offices located in 11 counties in Northern and Western Ohio, Lutheran Social Services provided 1,136 clients with individual and group counseling in 2021. Licensed therapists work with clients to confront those issues that have become overwhelming for them such as anger, depression, anxiety and fear, stress, families in conflict, sexual and physical abuse, coping with loss and addiction recovery. In addition to offering in person services, and thanks to the generosity of donors, LSS therapists were able to provide remote telehealth programming, giving clients the opportunity to work with a counselor outside of a normal work day.

1,136



360

RE-ENTRY PROGRAMS

Lutheran Social Services of Northwestern Ohio seeks to serve all people, including those who are returning to their community after a time of incarceration. The goal of the Re-entry Program is to assist those who have had previous felonies and misdemeanors as well as those currently involved in the court system to lower their rate of returning to incarceration.

LSS Re-entry Case Manager can assist our clients in housing, employment, transportation, child support, social security, identification cards and birth certificates. In partnership with our local court systems, clients are also able to participate in employment and job training opportunities.

We continue to connect our re-entry clients to these resources as we remove barriers that stand in their way. Together we can create safer neighborhoods and ultimately reduce the tendency to reoffend.

SERVING THOSE WITH INTELLECTUAL AND DEVELOPMENTAL DISABILITIES

546

Together Luther Home of Mercy and Filling Homes served 546 people. Individuals receiving services demonstrate a wide range of abilities and require specific support services tailored to meet their individual needs while promoting their greatest level of independence. These services may range from 24-hour care to assistance just a few hours each month.

Recognizing that the health and desires of the people entrusted to our care change throughout life's journey, we provide a full range of supports tailored to meet people where they are today and continue to serve them well into the future.



130

CAMPUS BASED HOUSING AND SERVICES



Luther Home of Mercy and Filling Homes offer vibrant communities where residents receive round the clock care, nursing, physician services and therapies. They also enjoy a wide variety of recreational and fitness opportunities, volunteering, employment and pastoral care services. Together, Luther Home of Mercy and Filling Home serves 130 people in four Intermediate Care Facilities (ICF).

COMMUNITY HOUSING AND SUPPORTED LIVING SERVICES

109

Since 1999, these affiliates have also worked to create small, community-based housing—a total of 26 single family homes—that now serve 109 individuals in six Ohio counties. Scattered throughout the region, we have been blessed by assistance from the Federal Department of Housing and Urban Development (HUD) to aid in the construction of these homes.

We are blessed by individual donors who have contributed to make this possible. Supports are designed to encourage the development of independent living skills ranging from the basics of personal care and social skills to shopping, meal planning and preparation, money management, home maintenance, medical follow up, planning leisure activities and access to spiritual services. We see people thrive when they have individualized and meaningful living and activity choices in their lives.



Our agencies recognize that those we serve desire and deserve greater independence and ties to the community. Eight community-based day programs are creating connections and new social, volunteer and employment opportunities.

When Covid-19 restrictions prevented center-based activities, we were challenged to find new ways to connect. Complying with monthly, and, at times daily regulation changes, programs that could operate did, and others temporarily closed until safety protocols could be in place.

Thankfully, our clients are now returning to these programs and in some cases neighborhood activities, wearing masks and beginning to see old friends again! We are so proud of these program efforts and look forward to continuing to create new opportunities in the year ahead.



WITH SPECIAL THANKS TO OUR COMMUNITY PARTNERS:



Evangelical Lutheran Church in America
God's work. Our hands.



Mission Connection

***"...in the same way, let your light shine before others,
that they may see your good deeds and glorify your Father in Heaven." — Matthew 5:16***

God has indeed called each of us to shine our light. And we invite you to connect to our mission of service and to shine your light on our work.

Prayer, Time and Talent are all engagement opportunities that mean the world to those we serve. Our clients face many challenges; please join them in prayer, or offer your time and talents as a volunteer.

Outright Gifts may be given as a direct contribution or a pledge that can be made over time. In our lives, God has asked each of us to practice true generosity and stewardship. Your gifts will be valued as a joyful response to what He has done for you and your family. Be assured that your wishes will always be honored and helpful to those we serve.

Planned Gifts are also an option for giving. While they require more planning than a traditional gift, we are always interested in meeting with you and your financial or tax advisors.

BENEFITS & BLESSINGS

"Adventurous and determined, our son, Leif, lived a tremendous life at Filling Homes. With his blue eyes twinkling and a grin on his face, he loved visiting with friends, participating in activities of his choice and living a great life! It was not easy for our family to send Leif to live outside of our home, but as we look back today we were so blessed that he was enriched by friendships and staff that loved him as much as we did.

Our whole family benefited from the joy of Filling Homes for over 50 years. Any support that we have been able to share, both financially and through advocacy has been inspired by that devotion.

While Leif is no longer with us, we want Filling Homes to be able to continue its mission of superb care and dedication for others like our son."



— Ben and Monica Bassett,
Focus on Filling



EMBRACING CHANGE FOR THE NEXT 100 YEARS

Lutheran Social Services of Northwestern Ohio is commemorating a very special anniversary this year: 110 years serving communities across 24 counties! Such a momentous anniversary compels us to pause and reflect on our history, celebrate our present achievements and imagine our future for generations to come.



Programs such as adoption, radio ministry, market basket delivery, and the homemaker program have been replaced with services to better reflect our community needs. Newer programs include: Mental Health Counseling, Crossroads Financial Opportunity Center, Re-entry Transitional Services for those leaving incarceration, a Choice Food and Personal Needs Pantries, Substance Use Disorder Counseling, Employer Resource Network, and more!

Our clients face significant challenges, but the dedication of our staff, volunteers and donors allows us to provide the very best programs to help them reach their goals.

The agency may be more relevant today than ever before. We are looking forward to celebrating our past, but more importantly, we are looking forward to our second century of service with you. Congratulations Lutheran Social Services on 110 years of service!



DEDICATED SERVICE TO OTHERS

"I've learned that people will forget what you said, people will forget what you did, but people will never forget how you made them feel." –Maya Angelou

Tammy Presnall has worked with people with intellectual and developmental disabilities for most of her adult career. In her work at Luther Home of Mercy she supervises a staff of direct support providers, provides training and ensures the smooth delivery of services for those in our care.

"Over the years, I have come to work with many people in my role as Assistant Director of Supported Living Services and have formed friendships that have impacted my life. I am often asked, 'What makes you love your job?' With a smile on my face, I say, the people I work with bring sunshine to my life. My employer provides me with the tools I need to do my job, and I can feel good at the end of the day."

We are honored to have staff, like Tammy, who are dedicated to giving of their time and talents to those in our care. Genuine, caring and lasting friendships are made when serving others. In 1 Corinthians 13:4-8, we are reminded that life is about caring, sharing and loving.



Together Toward Tomorrow

We are blessed by many donors who contribute to our individual affiliates and our collective work, sharing gifts of time, talent and treasure. We gratefully acknowledge the following faithful supporters who contributed to our work from January 1, 2021 to December 15, 2021 through Lutheran Ministries of Mercy and our Together Toward Tomorrow Campaign. We remain committed to continuing our services and working together to create new opportunities for those in our care. Together, and by His Grace, your gift moves us toward a brighter tomorrow.

Thank you to these donors who have made monetary gifts to the Together Toward Tomorrow campaign:

Ms. Sharon Aeschliman, Montpelier, OH
Mr. & Mrs. David L. Alvarado, Perrysburg, OH
Mr. & Mrs. Fred Anson, Baldwinsville, NY
Mrs. Ruth Arnot, Toledo, OH
Mr. & Mrs. Kenneth Arps, Celina, OH
Mr. Dale J. Avers, Luckey, OH
Mr. & Mrs. Leonard Bacon, Toledo, OH
Mr. Edward Baden, Gomer, OH
Mr. & Mrs. David Beakas, Waterville, OH
Mr. & Mrs. Arlyn Bensch, Oak Harbor, OH
Mr. & Mrs. Harlan Billow, Maumee, OH
Mrs. Carol Blackburn, Huron, OH
Mr. Richard Bockbrader, Toledo, OH
Mr. & Mrs. Bernell Boehm, Toledo, OH
Rev. & Mrs. Charles Campbell, Toledo, OH
Mr. & Mrs. Terry Cohrs, Napoleon, OH
Mr. Gerald F. Croll, Fayetteville, NC
Mr. Eugene Dierksheide, Fremont, OH
Ms. Vickie Ernst, Wauseon, OH
Mr. & Mrs. Thomas H. Euler, Bowling Green, OH
Mrs. Mary Farley, Toledo, OH
Friends of LMM, Northwestern, OH
Mr. Robert Gibson, Lima, OH
Mr. Brent Gnagey, Archbold, OH
Ms. Liz Gramlich, Beallsville, OH
Mr. & Mrs. Larson Haines, Holland, OH
Mr. & Mrs. Gerald V. Hazel, Perrysburg, OH
Mr. Frederick Honneffer, Ashland, OH
Mr. Michael House, Perrysburg, OH
Mr. & Mrs. John Hrovatich, Port Clinton, OH
Ms. Shelly Isley, Toledo, OH
Mr. & Mrs. John Jaksetic, Toledo, OH
Mr. & Mrs. Thomas P. Jedele, Oro Valley, AZ
Mr. & Mrs. Vasilis Karayannis, Millbury, OH
Rev. & Mrs. Dale Kern, Archbold, OH
Rev. & Mrs. Karl O. Kessler, Cincinnati, OH
Mr. & Mrs. Frank Kieswether, Englewood, FL
Ms. Marilyn Wilka Kornowski, Twinsburg, OH
Mrs. Linda Kroske, Arlington, OH
Ms. Mary Lou Kruse, Elmore, OH
Ms. Jeannette E. Kubitz, Sylvania, OH
Ms. Janet Lilje, Toledo, OH
Mr. & Mrs. Richard Martin, Bowling Green, OH

Mr. & Mrs. Glen McIntyre, Burt Lake, MI
Mr. & Mrs. Timothy Mennitt, Perryburg, OH
Mr. Michael Miller, Temperance, MI
Mrs. Nina M. Noblit, Butler, OH
St. Paul's Lutheran Church, McClure, OH
Ms. Jennifer Perdew, Napoleon, OH
Mr. & Mrs. David Pfisterer, Findlay, OH
Mrs. Virginia Podolny, Cleveland, OH
Mr. & Mrs. Dennis L. Price, Napoleon, OH
Judge Jack Puffenberger, Toledo, OH
Mr. William Reber, Toledo, OH
Mr. Ken Richmond, Oregon, OH
Mr. & Mrs. Arnie & Terri Rodriguez, Sylvania, OH
Mr. & Mrs. Timothy E. Roth, Waterville, OH
Mrs. Margaret San Gregory, Bellevue, OH
Mark Feldstein & Associates, Sylvania, OH
Mrs. Mary Lou Schak, Sylvania, OH
Mr. & Mrs. Michael Scheiding, Whitehouse, OH
Mr. & Mrs. John Schimpf, Bloomville, OH
Ms. Wanda Schlachter, Defiance, OH
Mr. Victor Schuerman, Pemberville, OH
Mr. & Mrs. Thomas H. Schult, Perrysburg, OH
Mr. Lawrence N. Schultz, Toledo, OH
Mr. & Mrs. Thomas E. Sevits, Perrysburg, OH
Mr. Michael Short, Archbold, OH
Mr. & Mrs. Todd A. Slight, Napoleon, OH
St. Paul Lutheran Church, Bowling Green, OH
St. Peter Lutheran Church, Napoleon, OH
St. Peter Lutheran Church, Norwalk, OH
Mr. & Mrs. Robert F. Stein, Perrysburg, OH
Mr. & Mrs. Jeff Straka, Genoa, OH
Mr. Kermit F. Stroh, Cincinnati, OH
Mr. Bruce Studer, Swanton, OH
Mrs. Patricia Tomazic, Huron, OH
Mr. & Mrs. Glenn VanHorn, Genoa, OH
Ms. Kathy Vickery, Bellevue, OH
Ms. Ann Vreeland, Marco Island, FL
Mr. & Mrs. Steven Warner, Bryan, OH
Mr. & Mrs. Daniel L. Whitacre, Maumee, OH
Rev. & Mrs. Donald L. Wukotich, Woodville, OH
Mr. & Mrs. Kevin Yarnell, Napoleon, OH
Ms. Verna Young, Fremont, OH
Mr. Robert Zellers, Findlay, OH



Gifts in Honor...

In honor of Geri Alexander

Ms. Sherralyn Kerns, Dayton, OH

In honor of George & Barbara Beery

Mr. & Mrs. G. Thomas Moore, Circleville, OH,

In honor of George Campbell

Ms. Carolyn Schell, Maumee, OH

In honor of Bob Coffman

Mr. & Mrs. Steven Siclair, Napoleon, OH

In honor of Deborah Craze

Mr. & Mrs. Robert J. Craze, Sterling Heights, MI

In honor of Cathy Dennison

Ms. Mary Ellen Nerod, Laughlin, NV

In honor of Rebecca Eddington

Ms. Audrey Sutton, Clyde, OH,

In honor of Helen Lambert

Mrs. Frances Wilson, Holland, OH

In honor of First St. Mark's Lutheran Church Congregation

Mrs. Rosann Murray, Oregon, OH

In honor of Nebraska House

Mr. & Mrs. Stephen Westrick, Toledo, OH

In honor of Andrew Nowak

Mrs. Helen Nowak, Graytown, OH

In honor of Lyle & Sharon Peters

Wedding Anniversary

Mr. & Mrs. Lyle Peters, Oak Harbor, OH

In honor of Mary K. Roberts

Mr. S. Dean Roberts, Holland, OH

In honor of Carol Schroeder retirement

Mrs. Jeanette Hrovatic, Port Clinton, OH

In honor of Mrs. Tabol's Birthday

Mrs. Jeanette Hrovatic, Port Clinton, OH

In honor of Wilbur & Annabelle Vandemark

Mr. & Mrs. Craig R. Salhoff, Hagerstown, IN

Gifts in Memory...

In memory of Norm & Lucile Atkinson

Ms. Yvonne Hammer, Fremont, OH

In memory of Cindy Aurand

Mrs. Cheryl Peterson, Fort Lauderdale, FL

In memory of Larry Baird

Ms. Kay Baird, Hicksville, OH

In memory of John Beddoes

Mr. Steven Betz, Toledo, OH

Mr. & Mrs. Gary & Shelly Fruchtmann, Toledo, OH

Jeep Group, Toledo, OH

Mr. & Mrs. Jeffrey Joyce, Toledo, OH

Mr. Gerald Kobil, Attorney, Perrysburg, OH

Sam Okun Produce, Toledo, OH

Ms. Joann Okun, Toledo, OH

Toledo Lutheran Bowling, Walbridge, OH

Toledo Lutheran Bowling League, Walbridge, OH

Mr. Tom Vollmer, Reynoldsburg, OH

Mr. & Mrs. Peter & Robin Weinstein, Toledo, OH

Mr. & Mrs. Chuck Winters, Sylvania, OH

In memory of Harold & Alta Bockbrader

Ms. Darla Culberson, Toledo, OH

In memory of Debbie Boose

Mr. & Mrs. Lawrence A. Skinn, Norwalk, OH

In memory of Charles Brant

Ms. Diane Brant, Fostoria, OH

In memory of Cody Brown

Mr. & Mrs. Richard F. Kohring, Sebring, FL

In memory of Otto & Lucy Bury

Mr. & Mrs. Clifford Bury, Oregon, OH

In memory of Kevin Campbell

Ms. Carolyn Schell, Maumee, OH

In memory of Dianne Cleary

Mr. Jeff Cleary Sr., Williston, OH

In memory of Walden "Bud" Damschroder

Mrs. Mary A. Damschroder, Perrysburg, OH

In memory of Patricia Delventhal

Mr. Kent A. Delventhal, Genoa, OH

In memory of Maurice Dietsch

Mrs. Jeanette Hrovatic, Port Clinton, OH

In memory of Bill & Edna Dombi

Ms. Carol Collins, Sylvania, OH

In memory of Paul & Leona Haar

Mr. & Mrs. Jack L. Haar, Doswell, VA

In memory of June Ann Hart

Mrs. Mary Ann Mosser, Fremont, OH

In memory of Carol Hood

Mr. & Mrs. Thomas E. Sevits, Perrysburg, OH

In memory of Christopher Jaye

Mrs. Alnita Paterson, Chardon, OH

In memory of Bobbi Johnson

Mr. & Mrs. Wayne R. Johnson, Rossford, OH

In memory of Shaylee Junga

Friend of LMM

In memory of Rev. Jeffrey Kimpel

Mrs. Louise Kimpel, Perrysburg, OH

In memory of Tony Lompis

Ms. Kristin Ruddy, Sylvania, OH

In memory of Loved Ones

Mrs. Darlene J. Butler, Canton, MI

In memory of Dean & Hazel Marsh

Mr. & Mrs. Robert Marsh, Sun City, AZ

In memory of Paul Edward Martaus

Mr. Mike Martaus, Cleveland, OH

In memory of Dante Marty

Mr. & Mrs. John Hrovatic, Port Clinton, OH

In memory of Mr. & Mrs. Carl A. Nelson

Mr. & Mrs. William Nelson, Oregon, OH

In memory of Walter Nelson

Mrs. Lola Nelson, Perrysburg, OH

In memory of Janet Otermat

Mr. Sam Otermat, Fremont, OH

In memory of Andrew & Alyssa Patrick

Mr. & Mrs. Douglas Patrick, Defiance, OH

In memory of Jerome B. Pollauf

Mr. & Mrs. Michael J. Pollauf, Sylvania, OH

In memory of Milton Pommeranz

Mr. & Mrs. Todd A. Slight, Napoleon, OH

Mrs. Terri Rodriguez, Sylvania, OH

In memory of Alyne Rist

Mrs. Margie A. Wegman, Oak Harbor, OH

In memory of Joseph Rybarczyk

Mr. & Mrs. James Rybarczyk, Maumee, OH

In memory of Bob Sandwisch

Mrs. Marilyn Sandwisch, Oak Harbor, OH

In memory of Alfred Bast & Raymond Schell

Mrs. Donna M. Schell, Genoa, OH

In memory of Mrs. Dilly Schimming

Mrs. June V. Smarkel, Curtice, OH

In memory of Ronald Schimming

Mr. & Mrs. John Hrovatic, Port Clinton, OH

In memory of David Schober

Mrs. Eloise Schober, Perrysburg, OH

In memory of Luther & Darlene Shafer

Mr. & Mrs. Mark L. Shafer, Bloomville, OH

In memory of Louis Snyder

Mrs. Jean Snyder, Perrysburg, OH

In memory of my son Stevie

Ms. Carol Waddington, Sylvania, OH

In memory of Richard Sutter

Mr. & Mrs. Thomas Sutter, North Fairfield, OH

In memory of Annabelle M. Tea

Friend of LMM

In memory of Carl & Ella Kopfman & Carl Titgemeyer

Mrs. Doris Titgemeyer, Curtice, OH

In memory of Denelda Vorwerk

Mr. & Mrs. Leonard L. Sonnenberg, Napoleon, OH

In memory of Donald & Elnora Vorwerk

Mr. & Mrs. Glenn R. Storm, Jr., Dundee, IL

In memory of Paul & Iris Zeitner

Mrs. Vickie Davis-Mahler, Sylvania, OH

In memory of Max & Elsa Ziegler

Mr. Max Ziegler, Ann Arbor, MI,

Churches & Leadership

We are honored to have 260 Association of Congregation Lutheran Churches and an additional 20 churches join us in our ministry. Members of these congregations and other community leaders comprise our Board of Directors.

260

Chuck Winters, Chair

Christina Fletcher, 1st Vice Chair • Michelle Dean, 2nd Vice Chair

Denise Lalonde, Secretary • Tim Schumm, Treasurer

Bobbie Abel
Bob Bethel
Jan Bratton
Rev. Julie Lejman-Guy
Rev. Stephen Lutz

Jeff Mires
Barbara Moellman
M. Christine Palmer
Michael Scheiding
Edward Schulte

Jeffrey Schwartz
Bishop Chester Trail
Nathan Zechman

REFRAMING TO GROW



Presenters, Board Members and staff come together for Diversity, Equity, and Inclusion training. As organizations united by Christ, the LMM ministries are committed to a diverse culture where all can thrive.

During 2021 the LMM Board of Directors and agency leadership teams committed to a defined process of building understanding and acceptance of more diverse work cultures within our organizations. Board members Bob Bethel and Bishop Chester Trail were joined by consultants Sheila Eason and Dr. Patrice McClellan to launch this effort at the annual Board retreat day in November.

Attended by Board and Foundation Board members and agency leadership, presenters facilitated conversation and trainings not only for the purpose of investing in our staff today, but for building for the future health and growth of our ministries.

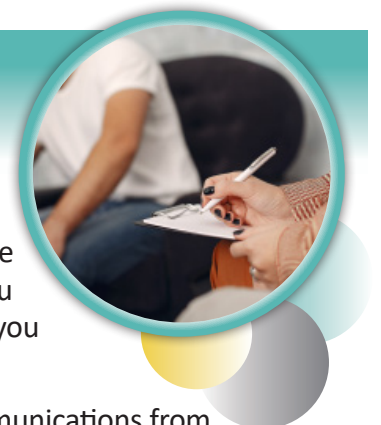
Work will continue in 2022 and beyond as we strive to remove any barriers to reframe, grow and reach our fullest potential.

Legacy Society



As part of our ongoing desire to learn about you and those who have remembered our ministries with a legacy, estate or planned gift, we have created the Legacy Society. When you notify us that you have remembered one of us in your plans, you become a member.

As a member of our Legacy Society, we will send special communications from our President, invitations to various events and more. Thank you for allowing us the opportunity to recognize you today.



LMM LEADERSHIP TEAM

Terri Rodriguez
President & CEO

Lori Beakas
Director of Facilities

Jeanette Hrovatich
Director of Planned Giving

Kenneth Richmond
Director of Finance

Michael Short
Director of Information Technology

Carol Slight
Vice President, Filling Homes

Tracia Jaksetic
Vice President, Lutheran Social Services

YEARS OF SERVICE RECOGNIZED

Service above self. We are honored by the dedicated and collective work of 904 members of our staff. Even in a pandemic year, they shared their time and talents with those in our care. We would like to recognize the following members of our 2021 team who are now enjoying retirement after serving in our ministries. With a combined 435 years of service, they are missed and so deserving of our thanks. Please join us in thanking:

Filling Homes

Diana Ashenfelter, 10 years
Diane Altman, 20 years
Tina Bogert, 2.5 Years
Martha Daniel, 16 years
Debra Fahringer, 49 years
Becky Gabers, 11 years

Filling Homes & Lutheran Ministries of Mercy

Carol Schroeder, 21 years

Luther Home of Mercy

Nancy Avery, 2.5 years
George Bankertz, 17 years
Timothy Calhoun, 11.5 years
Jodi Espinoza, 44 years
Kathy Grau, 8 years
John Irvin, 3.5 years
John Lauback, 6 years
Jackie Osborne, 27 years
Deb Wehner, 26.5 years
Deb Wilburn, 44 years

Lutheran Social Services

Lucy Wayton, 21 years
Joyce Willier, 55 years
Nancy Yunker, 40 years



 **5810 N. Main Street PO BOX 187**
Williston, Ohio 43468

 **419 - 972 - 4373**

 **www.lutheranministriesofmercy.org**